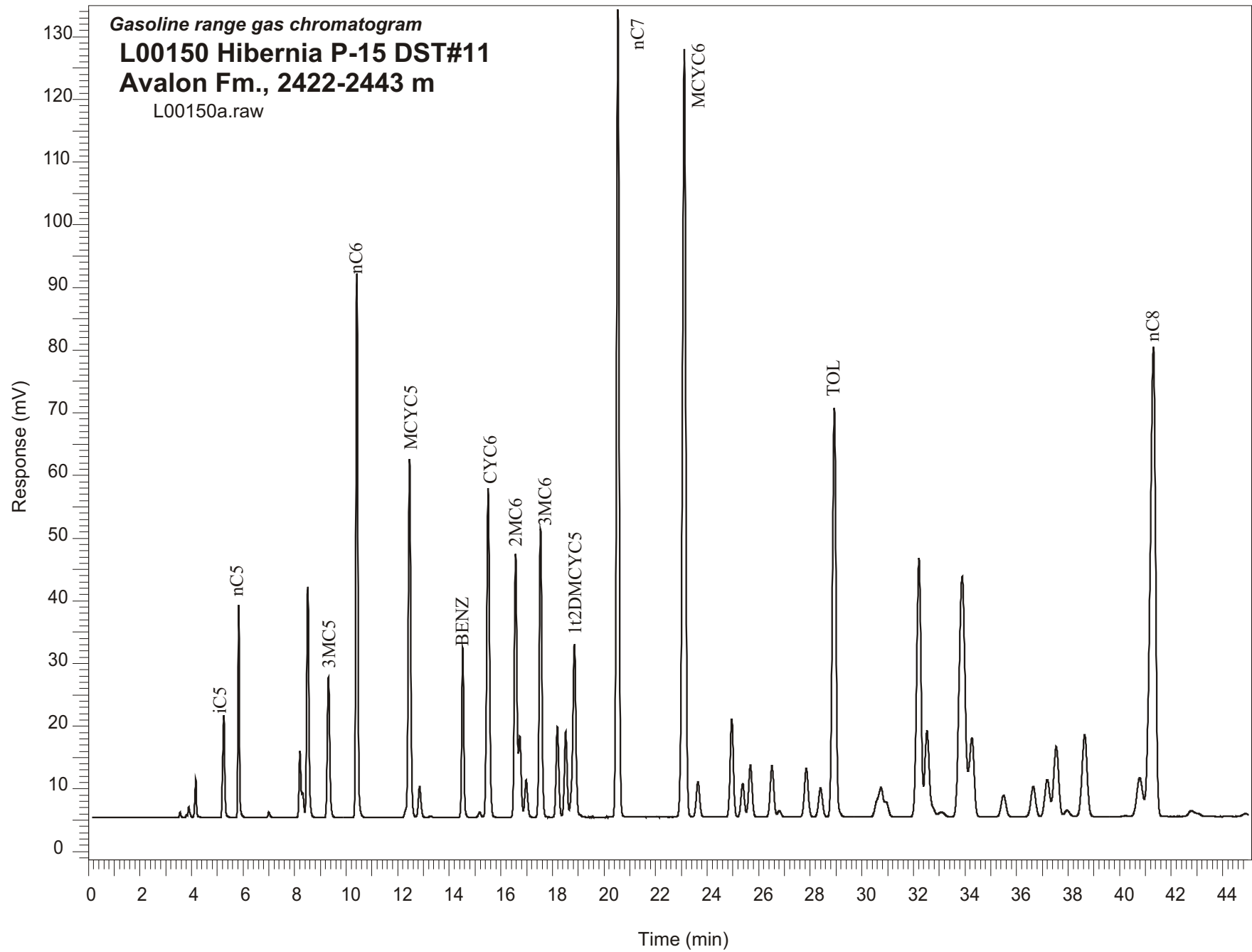


Gasoline range gas chromatogram
L00150 Hibernia P-15 DST#11
Avalon Fm., 2422-2443 m
L00150a.raw



Sample Name: #150 Hibernia P-15 DST #11

GASOLINE RANGE ANALYSIS DATA

ORGANIC GEOCHEMISTRY LAB GSC CALGARY

Ret Time [min]	Compound	Area	Height [uV]
5.26	iC5	92786	16338
5.83	nC5	126929	34067
7	22DMC4	4166	869
8.21	CYC5	56908	10655
8.31	23DMC4	18736	4002
8.51	2MC5	220763	36806
9.31	3MC5	146374	22465
10.41	nC6	449745	86810
12.46	MCYC5	383596	57287
12.85	24DMC5	36413	4986
13.27	223TMC4	1682	257
14.52	Benzene	155682	27152
15.18	33DMC5	6177	861
15.51	CYC6	404560	52528
16.57	2MC6	297007	42026
16.73	23DMC5	88999	12984
16.98	11DMCYC5	45815	5995
17.54	3MC6	329388	46009
18.19	1c3DMCYC5	107505	14501
18.52	1t3DMCYC5	102199	13634
18.85	1t2DMCYC5	241939	27653
20.54	nC7	899937	128928
23.11	MCYC6	1108513	122581
23.64	22DMC6	52011	5637
24.96	ECYC5	136636	15642
25.38	25DMC6	49669	5360
25.68	24DMC6	77855	8251
26.52	223TMC5	80183	8152
28.4	234TMC5	49753	4667
28.93	Toluene	627327	65229
32.22	2MC7	477990	41284
34.27	3MC7	163951	12582
40.78	1c4DMCYC6	97504	6156
41.31	nC8	1105641	74931