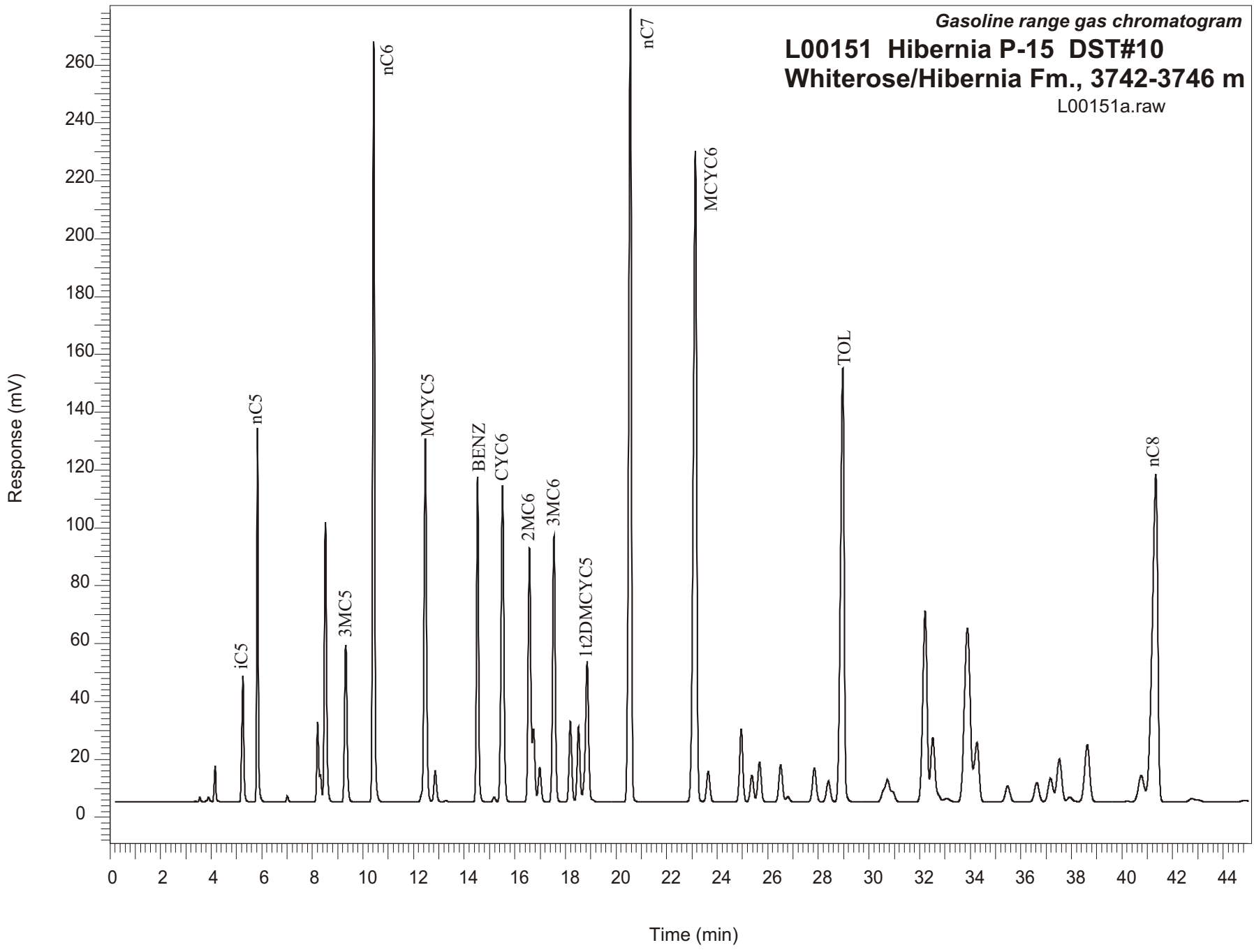


Gasoline range gas chromatogram  
L00151 Hibernia P-15 DST#10  
Whiterose/Hibernia Fm., 3742-3746 m  
L00151a.raw



Sample Name: #151 Hibernia DST#10 P-15

-----  
GASOLINE RANGE ANALYSIS DATA  
-----

ORGANIC GEOCHEMISTRY LAB GSC CALGARY  
-----

Ret Time [min]	Compound	Area	Height [uV]
5.26	iC5	248993	43618
5.83	nC5	504357	129794
7.01	22DMC4	10047	2023
8.21	CYC5	153349	27651
8.31	23DMC4	43083	9484
8.51	2MC5	608117	96762
9.32	3MC5	370859	54372
10.42	nC6	1389933	262908
12.46	MCYC5	869051	125601
12.86	24DMC5	79678	10744
13.28	223TMC4	3463	490
14.53	Benzene	657959	112607
15.18	33DMC5	12354	1706
15.51	CYC6	871336	109314
16.58	2MC6	634561	87865
16.74	23DMC5	169385	25068
16.99	11DMCYC5	92584	12086
17.55	3MC6	671988	91992
18.2	1c3DMCYC5	211608	27786
18.52	1t3DMCYC5	200140	25986
18.86	1t2DMCYC5	434112	48526
20.57	nC7	1998179	274541
23.14	MCYC6	2090144	225094
23.64	22DMC6	97015	10533
24.95	ECYC5	219472	25131
25.37	25DMC6	86061	9218
25.68	24DMC6	130181	13700
26.51	223TMC5	129198	12900
28.4	234TMC5	78426	7186
28.96	Toluene	1491673	150089
32.22	2MC7	776472	66070
34.27	3MC7	263748	20489
40.76	1c4DMCYC6	143219	9059
41.34	nC8	1735228	113128