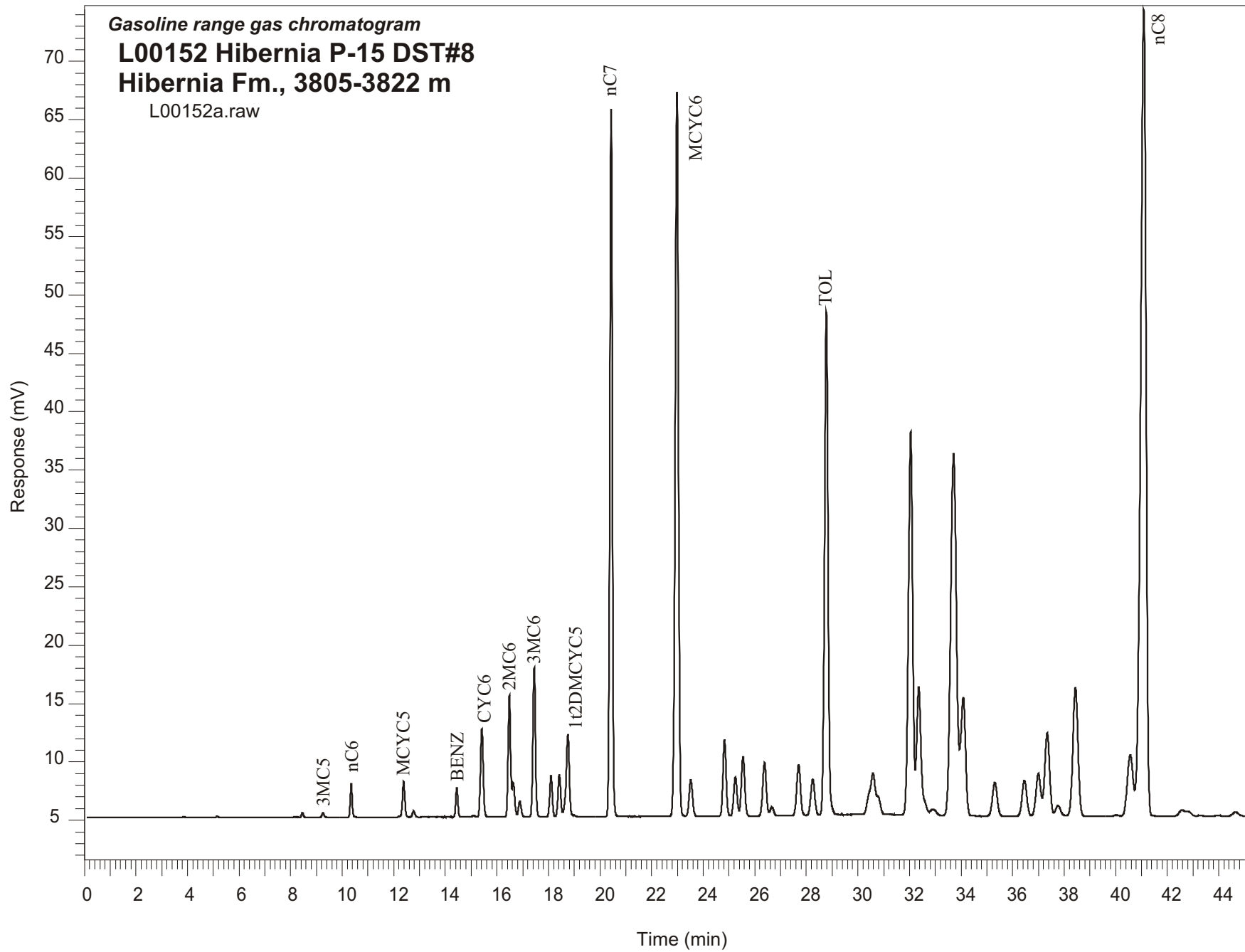


Gasoline range gas chromatogram  
**L00152 Hibernia P-15 DST#8**  
**Hibernia Fm., 3805-3822 m**  
L00152a.raw



Sample Name: #152 Hibernia P-15 DST #8

-----  
GASOLINE RANGE ANALYSIS DATA  
-----

ORGANIC GEOCHEMISTRY LAB GSC CALGARY  
-----

Ret Time [min]	Compound	Area	Height [uV]
8.16	23DMC4	151	35
8.46	2MC5	2217	401
9.25	3MC5	2381	391
10.35	nC6	14685	2885
12.38	MCYC5	20096	3088
12.77	24DMC5	3698	525
14.44	Benzene	14243	2507
15.1	33DMC5	1088	159
15.41	CYC6	55355	7553
16.48	2MC6	71872	10436
16.63	23DMC5	19270	2927
16.89	11DMCYC5	10141	1347
17.44	3MC6	89301	12809
18.1	1c3DMCYC5	25159	3519
18.42	1t3DMCYC5	26899	3616
18.75	1t2DMCYC5	60770	7070
20.43	nC7	419332	60584
22.98	MCYC6	535761	62053
23.52	22DMC6	28882	3119
24.83	ECYC5	56678	6558
25.25	25DMC6	30378	3321
25.55	24DMC6	47317	5083
26.38	223TMC5	44517	4592
28.25	234TMC5	32639	3101
28.78	Toluene	414015	43042
32.05	2MC7	376096	32830
34.09	3MC7	131694	10163
40.56	1c4DMCYC6	80862	5237
41.09	nC8	1009296	69036