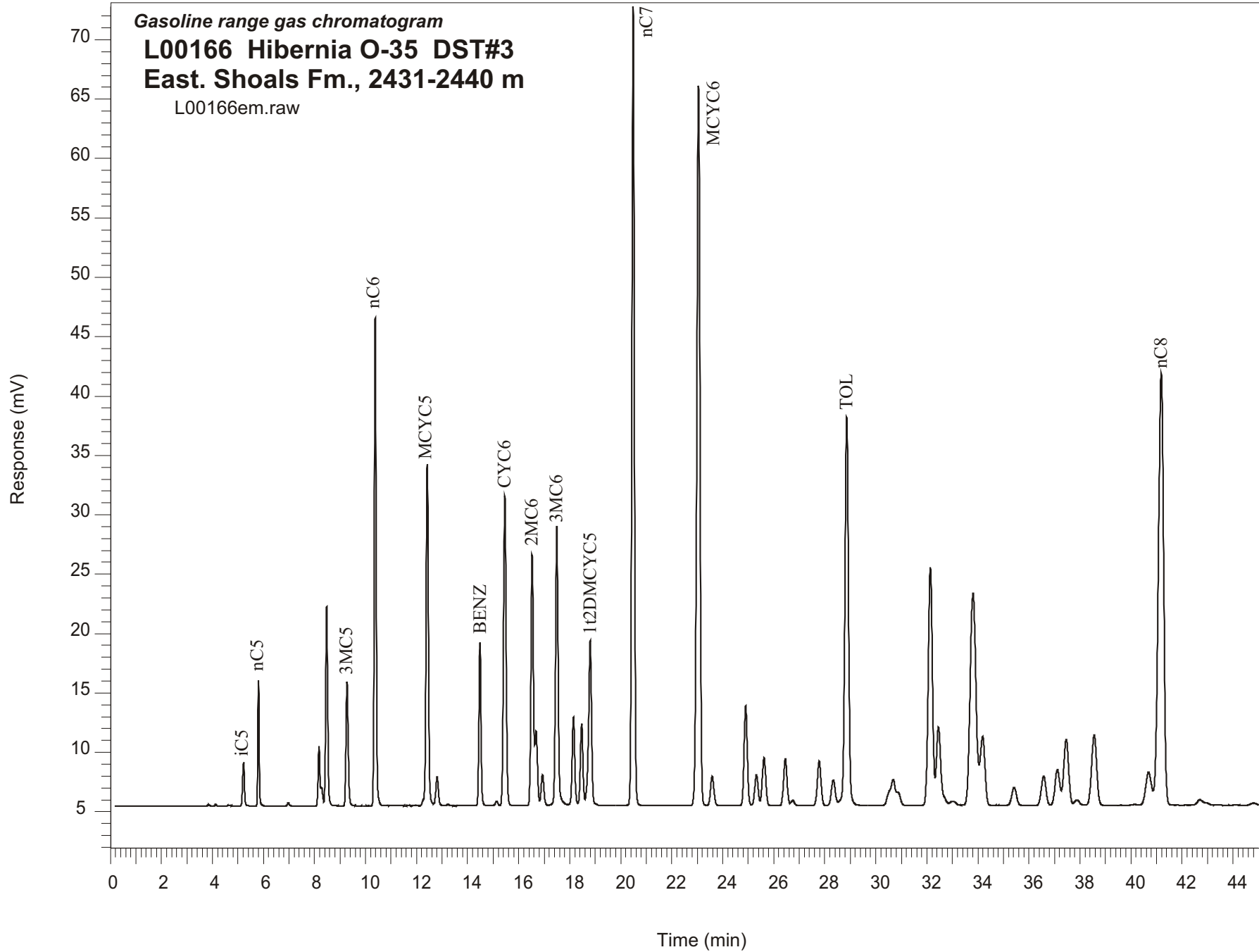


Gasoline range gas chromatogram
L00166 Hibernia O-35 DST#3
East. Shoals Fm., 2431-2440 m
L00166em.raw



Sample Name: #166 Hibernia

GASOLINE RANGE ANALYSIS DATA

ORGANIC GEOCHEMISTRY LAB GSC CALGARY

Ret Time [min]	Compound	Area	Height [uV]
5.22	iC5	19114	3703
5.8	nC5	37762	10544
6.97	22DMC4	1399	291
8.18	CYC5	25672	5018
8.28	23DMC4	7390	1567
8.47	2MC5	92792	16820
9.28	3MC5	63178	10441
10.38	nC6	210534	41165
12.42	MCYC5	184338	28752
12.8	24DMC5	17927	2461
13.23	223TMC4	748	113
14.48	Benzene	78672	13746
15.13	33DMC5	2686	377
15.46	CYC6	189064	26048
16.53	2MC6	145032	21122
16.68	23DMC5	41288	6297
16.93	11DMCYC5	19977	2596
17.49	3MC6	173785	23518
18.15	1c3DMCYC5	54746	7449
18.47	1t3DMCYC5	49770	6887
18.8	1t2DMCYC5	115758	13873
20.49	nC7	463589	67237
23.05	MCYC6	524696	60654
23.58	22DMC6	22591	2465
24.9	ECYC5	72826	8395
25.32	25DMC6	23964	2590
25.62	24DMC6	38076	4030
26.46	223TMC5	38031	3943
28.33	234TMC5	23609	2155
28.86	Toluene	321919	32708
32.14	2MC7	228892	20043
34.19	3MC7	75385	5790
40.69	1c4DMCYC6	42878	2778
41.18	nC8	522708	36388