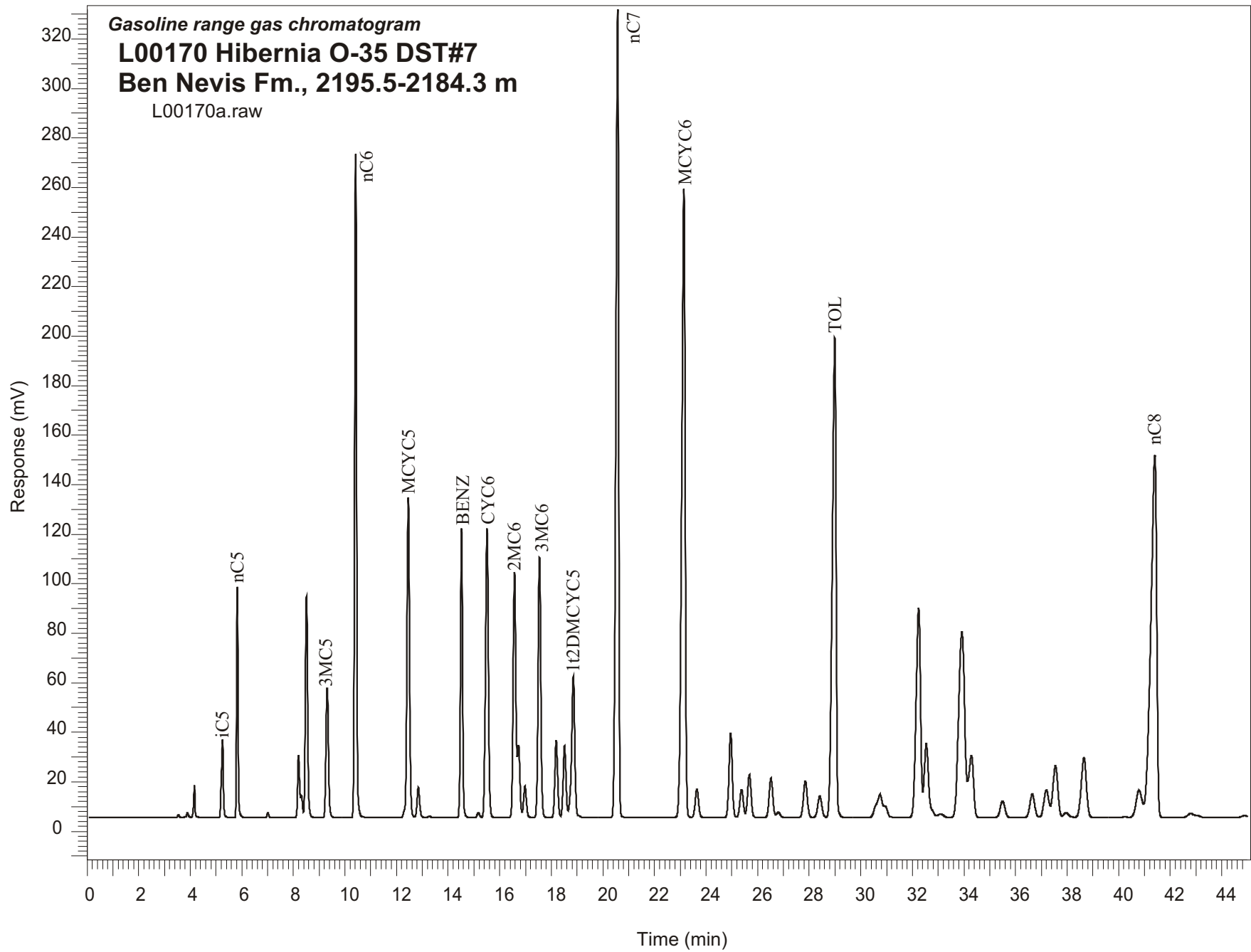


Gasoline range gas chromatogram
L00170 Hibernia O-35 DST#7
Ben Nevis Fm., 2195.5-2184.3 m
L00170a.raw



Sample Name: #170 Hibernia 0-35 DST#7

GASOLINE RANGE ANALYSIS DATA

ORGANIC GEOCHEMISTRY LAB GSC CALGARY

| Ret Time [min] | Compound | Area | Height [uV] |
|-------------------|-----------|---------|----------------|
| 5.25 | iC5 | 171512 | 31612 |
| 5.82 | nC5 | 357463 | 93517 |
| 7.01 | 22DMC4 | 9189 | 1950 |
| 8.2 | CYC5 | 140989 | 25356 |
| 8.31 | 23DMC4 | 40405 | 8922 |
| 8.5 | 2MC5 | 559967 | 89327 |
| 9.31 | 3MC5 | 351687 | 52218 |
| 10.41 | nC6 | 1393473 | 268060 |
| 12.45 | MCYC5 | 901468 | 129261 |
| 12.84 | 24DMC5 | 87952 | 12311 |
| 13.27 | 223TMC4 | 3940 | 577 |
| 14.52 | Benzene | 663706 | 116851 |
| 15.17 | 33DMC5 | 14045 | 1968 |
| 15.51 | CYC6 | 923658 | 116880 |
| 16.58 | 2MC6 | 733580 | 99312 |
| 16.73 | 23DMC5 | 190676 | 29266 |
| 16.98 | 11DMCYC5 | 96148 | 12795 |
| 17.54 | 3MC6 | 779808 | 105099 |
| 18.19 | 1c3DMCYC5 | 238809 | 31139 |
| 18.52 | 1t3DMCYC5 | 225809 | 28978 |
| 18.86 | 1t2DMCYC5 | 503149 | 57127 |
| 20.58 | nC7 | 2403727 | 326440 |
| 23.14 | MCYC6 | 2381708 | 254033 |
| 23.64 | 22DMC6 | 105118 | 11523 |
| 24.96 | ECYC5 | 299879 | 34068 |
| 25.38 | 25DMC6 | 107100 | 11390 |
| 25.68 | 24DMC6 | 165749 | 17274 |
| 26.52 | 223TMC5 | 158403 | 15872 |
| 28.41 | 234TMC5 | 96325 | 8694 |
| 28.99 | Toluene | 1968675 | 193767 |
| 32.24 | 2MC7 | 1013757 | 84736 |
| 34.29 | 3MC7 | 322863 | 25157 |
| 40.79 | 1c4DMCYC6 | 177490 | 11036 |
| 41.4 | nC8 | 2346004 | 146384 |