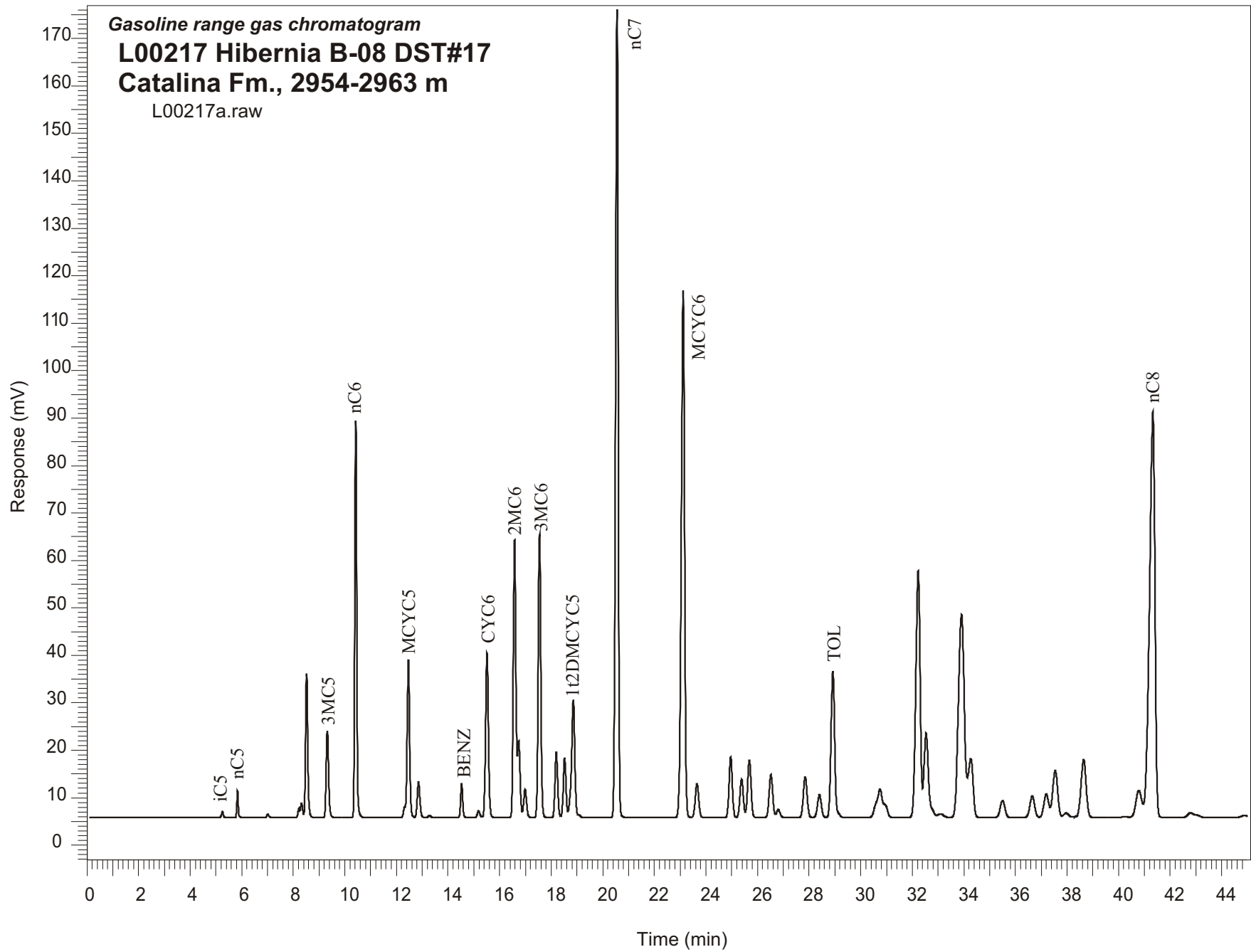


Gasoline range gas chromatogram  
L00217 Hibernia B-08 DST#17  
Catalina Fm., 2954-2963 m  
L00217a.raw



Sample Name: #217 Hibernia B-08 DST#17

-----  
GASOLINE RANGE ANALYSIS DATA  
-----

ORGANIC GEOCHEMISTRY LAB GSC CALGARY  
-----

Ret Time [min]	Compound	Area	Height [uV]
5.25	iC5	6630	1320
5.84	nC5	20957	5614
7.01	22DMC4	3751	755
8.22	CYC5	9212	1937
8.32	23DMC4	17583	3022
8.51	2MC5	181741	30362
9.32	3MC5	119669	18266
10.42	nC6	434448	83724
12.46	MCYC5	230906	33172
12.86	24DMC5	54588	7535
13.28	223TMC4	3304	489
14.53	Benzene	41188	7168
15.19	33DMC5	10525	1458
15.51	CYC6	269718	34824
16.58	2MC6	413616	58583
16.74	23DMC5	108497	16122
16.99	11DMCYC5	46029	6025
17.55	3MC6	426436	59723
18.2	1c3DMCYC5	99568	13675
18.52	1t3DMCYC5	89099	12302
18.86	1t2DMCYC5	214370	24433
20.56	nC7	1200449	170222
23.12	MCYC6	994662	111040
23.65	22DMC6	66339	7126
24.96	ECYC5	110467	12753
25.38	25DMC6	74774	8127
25.68	24DMC6	113804	12109
26.52	223TMC5	89352	9062
28.4	234TMC5	51022	4848
28.92	Toluene	301505	30842
32.23	2MC7	605297	51948
34.27	3MC7	163084	12420
40.79	1c4DMCYC6	89632	5655
41.33	nC8	1270440	85634