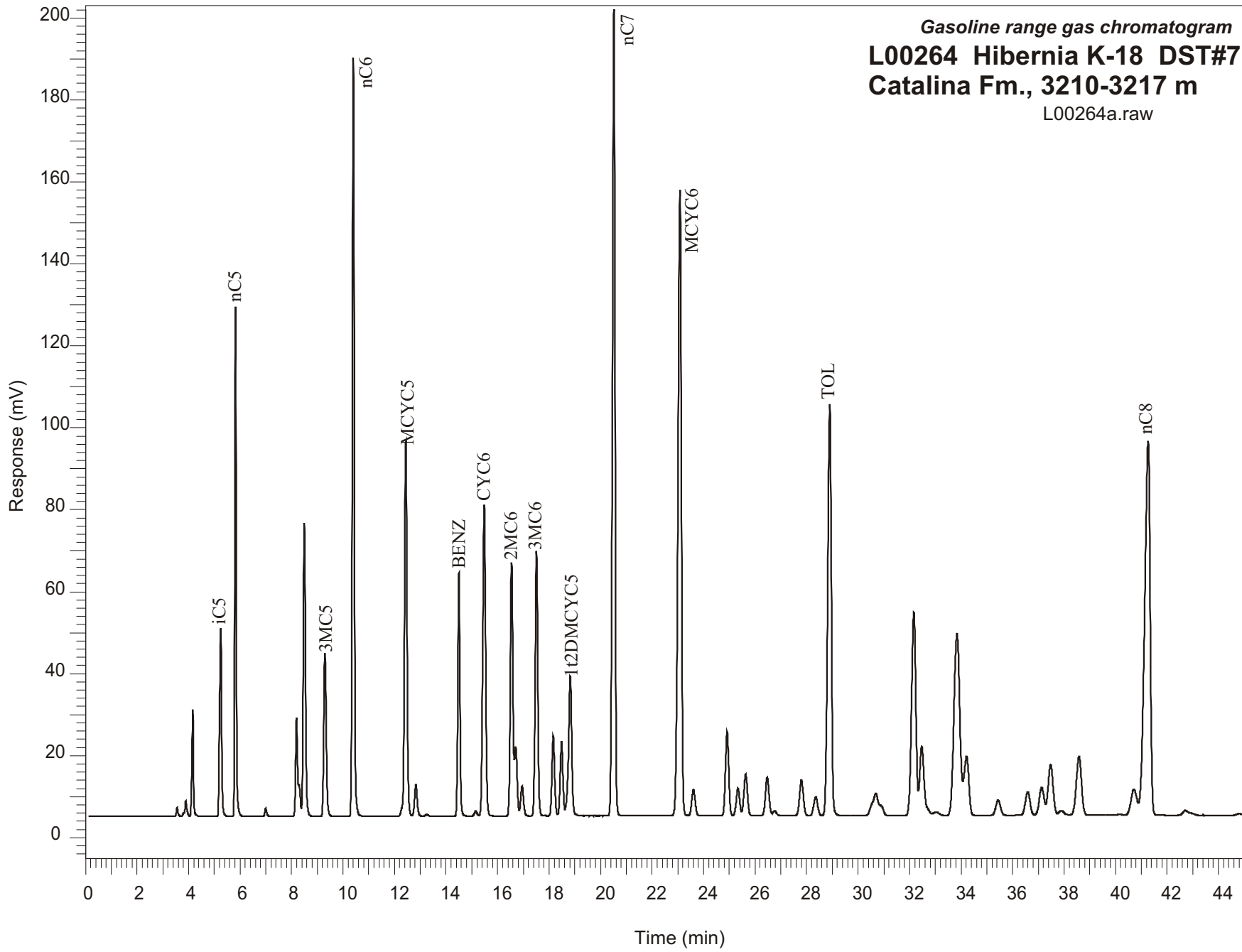


Gasoline range gas chromatogram  
L00264 Hibernia K-18 DST#7  
Catalina Fm., 3210-3217 m  
L00264a.raw



Sample Name: #264 Hibernia K-18 DST#7

-----  
GASOLINE RANGE ANALYSIS DATA  
-----

ORGANIC GEOCHEMISTRY LAB GSC CALGARY  
-----

Ret Time [min]	Compound	Area	Height [uV]
5.25	iC5	264195	45891
5.82	nC5	467623	124503
7	22DMC4	9706	2000
8.19	CYC5	130640	24075
8.3	23DMC4	33930	7718
8.49	2MC5	434998	71722
9.3	3MC5	264809	39738
10.4	nC6	965297	185601
12.44	MCYC5	618673	91600
12.83	24DMC5	56717	7724
13.25	223TMC4	2736	406
14.5	Benzene	341351	59415
15.15	33DMC5	9039	1260
15.48	CYC6	597523	76075
16.55	2MC6	438479	61852
16.7	23DMC5	114778	16944
16.96	11DMCYC5	56496	7365
17.51	3MC6	463294	64632
18.16	1c3DMCYC5	146338	19621
18.49	1t3DMCYC5	136462	18107
18.82	1t2DMCYC5	302067	34102
20.52	nC7	1393410	196637
23.08	MCYC6	1384859	152868
23.61	22DMC6	59608	6462
24.92	ECYC5	178879	20552
25.34	25DMC6	61687	6677
25.64	24DMC6	95644	10145
26.47	223TMC5	92787	9405
28.36	234TMC5	49182	4596
28.9	Toluene	972250	100498
32.17	2MC7	574322	49525
34.22	3MC7	186690	14488
40.71	1c4DMCYC6	99632	6337
41.26	nC8	1368493	91325