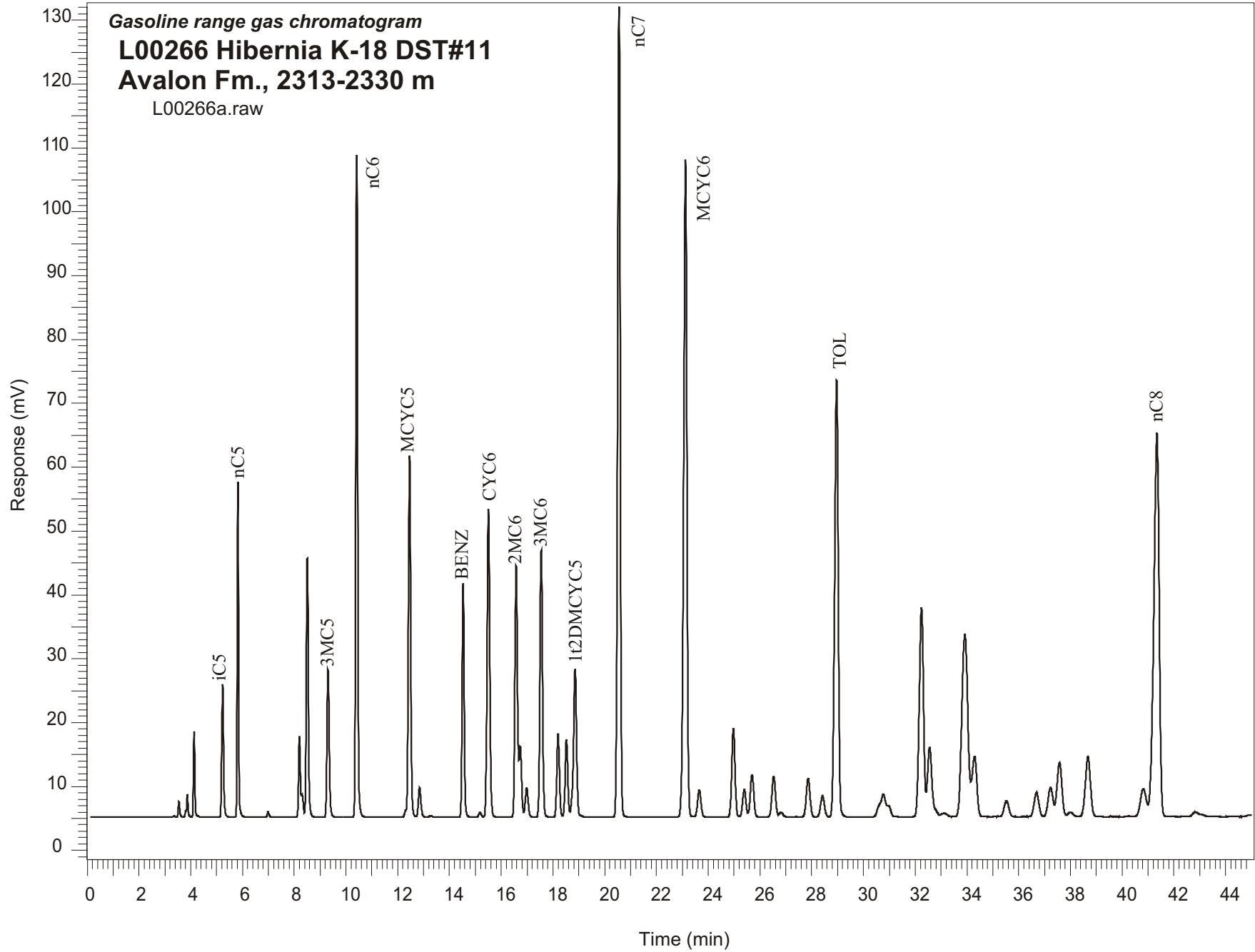


Gasoline range gas chromatogram  
**L00266 Hibernia K-18 DST#11**  
**Avalon Fm., 2313-2330 m**  
L00266a.raw



Sample Name: #266 Hibernia K-18 DST #1

-----  
GASOLINE RANGE ANALYSIS DATA  
-----

ORGANIC GEOCHEMISTRY LAB GSC CALGARY  
-----

Ret Time [min]	Compound	Area	Height [uV]
5.23	iC5	105670	20789
5.82	nC5	181048	52403
6.99	22DMC4	3988	842
8.2	CYC5	61979	12639
8.3	23DMC4	17348	3630
8.5	2MC5	221794	40630
9.31	3MC5	139093	23143
10.42	nC6	525383	104061
12.46	MCYC5	357038	56681
12.85	24DMC5	32662	4653
13.27	223TMC4	1524	224
14.53	Benzene	208455	36736
15.18	33DMC5	5147	719
15.51	CYC6	352968	48312
16.58	2MC6	271008	39393
16.73	23DMC5	72425	11057
16.99	11DMCYC5	35333	4654
17.55	3MC6	290706	41844
18.2	1c3DMCYC5	92401	13002
18.52	1t3DMCYC5	87107	12167
18.86	1t2DMCYC5	196193	23266
20.56	nC7	884205	126852
23.12	MCYC6	897520	102996
23.65	22DMC6	38351	4214
24.98	ECYC5	119866	13858
25.4	25DMC6	39585	4344
25.69	24DMC6	62108	6663
26.53	223TMC5	61731	6377
28.42	234TMC5	35446	3349
28.96	Toluene	654436	68450
32.24	2MC7	375000	32836
34.3	3MC7	122379	9492
40.82	1c4DMCYC6	67943	4352
41.35	nC8	873944	60042