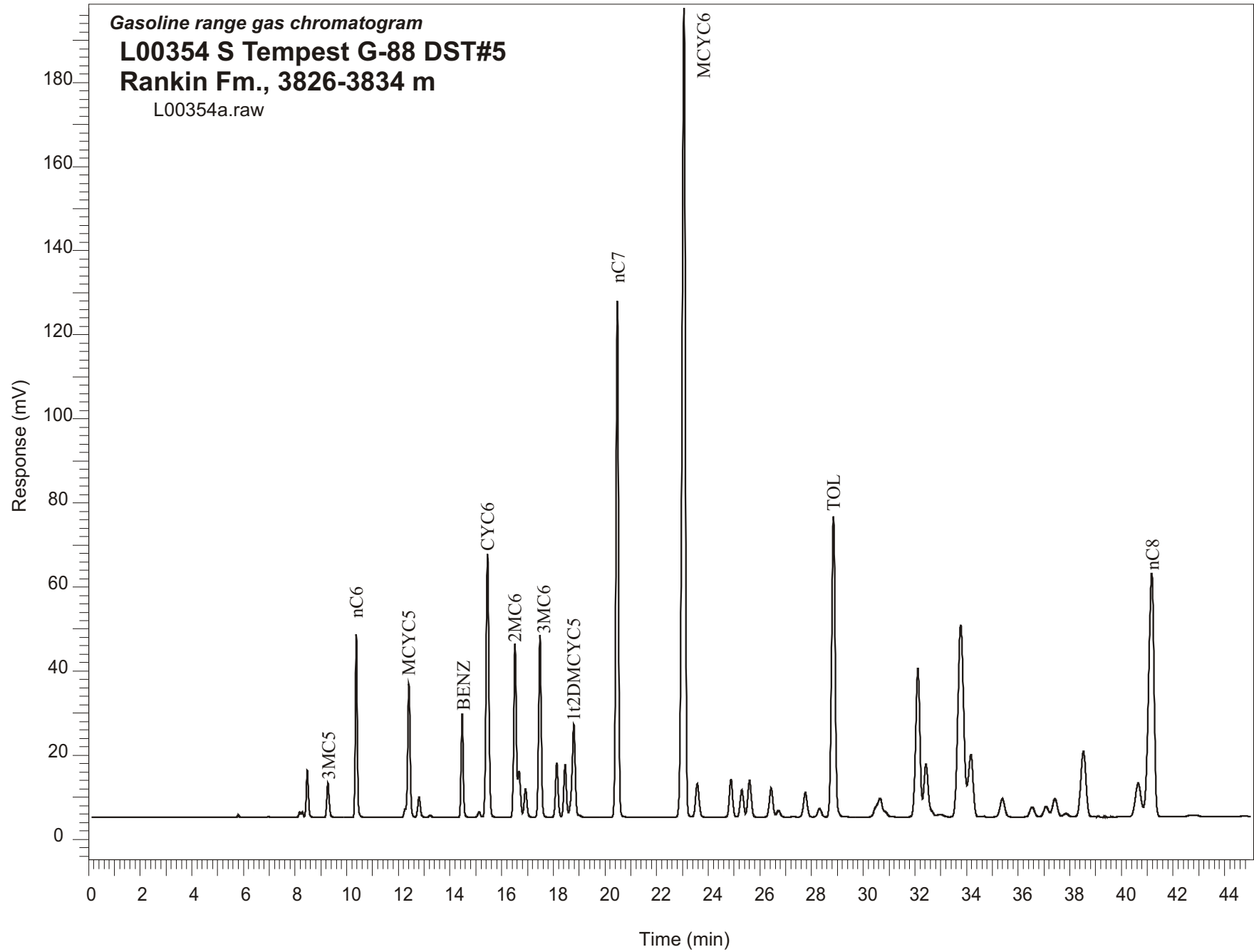


Gasoline range gas chromatogram  
**L00354 S Tempest G-88 DST#5**  
**Rankin Fm., 3826-3834 m**  
L00354a.raw



Sample Name: #354 S. Tempest G-88 DST#5

-----  
GASOLINE RANGE ANALYSIS DATA  
-----

ORGANIC GEOCHEMISTRY LAB GSC CALGARY  
-----

Ret Time [min]	Compound	Area	Height [uV]
5.22	iC5	270	48
5.8	nC5	2315	640
6.96	22DMC4	937	203
8.17	CYC5	6434	1317
8.28	23DMC4	7009	1289
8.47	2MC5	63991	11173
9.27	3MC5	51779	8256
10.37	nC6	224101	43665
12.41	MCYC5	213783	31719
12.8	24DMC5	34820	4865
13.22	223TMC4	3331	492
14.47	Benzene	139769	24479
15.12	33DMC5	8824	1255
15.45	CYC6	471194	62512
16.52	2MC6	286199	41340
16.67	23DMC5	73478	11088
16.92	11DMCYC5	50294	6647
17.48	3MC6	305262	43426
18.13	1c3DMCYC5	93513	12891
18.46	1t3DMCYC5	91206	12452
18.79	1t2DMCYC5	194912	22118
20.48	nC7	857169	122935
23.06	MCYC6	1700218	192349
23.58	22DMC6	74029	7957
24.88	ECYC5	77162	9002
25.3	25DMC6	58919	6474
25.6	24DMC6	80625	8698
26.44	223TMC5	67365	6937
28.31	234TMC5	20859	1975
28.85	Toluene	690365	71623
32.12	2MC7	404798	35304
34.17	3MC7	192037	14879
40.65	1c4DMCYC6	122107	8031
41.17	nC8	839642	57985