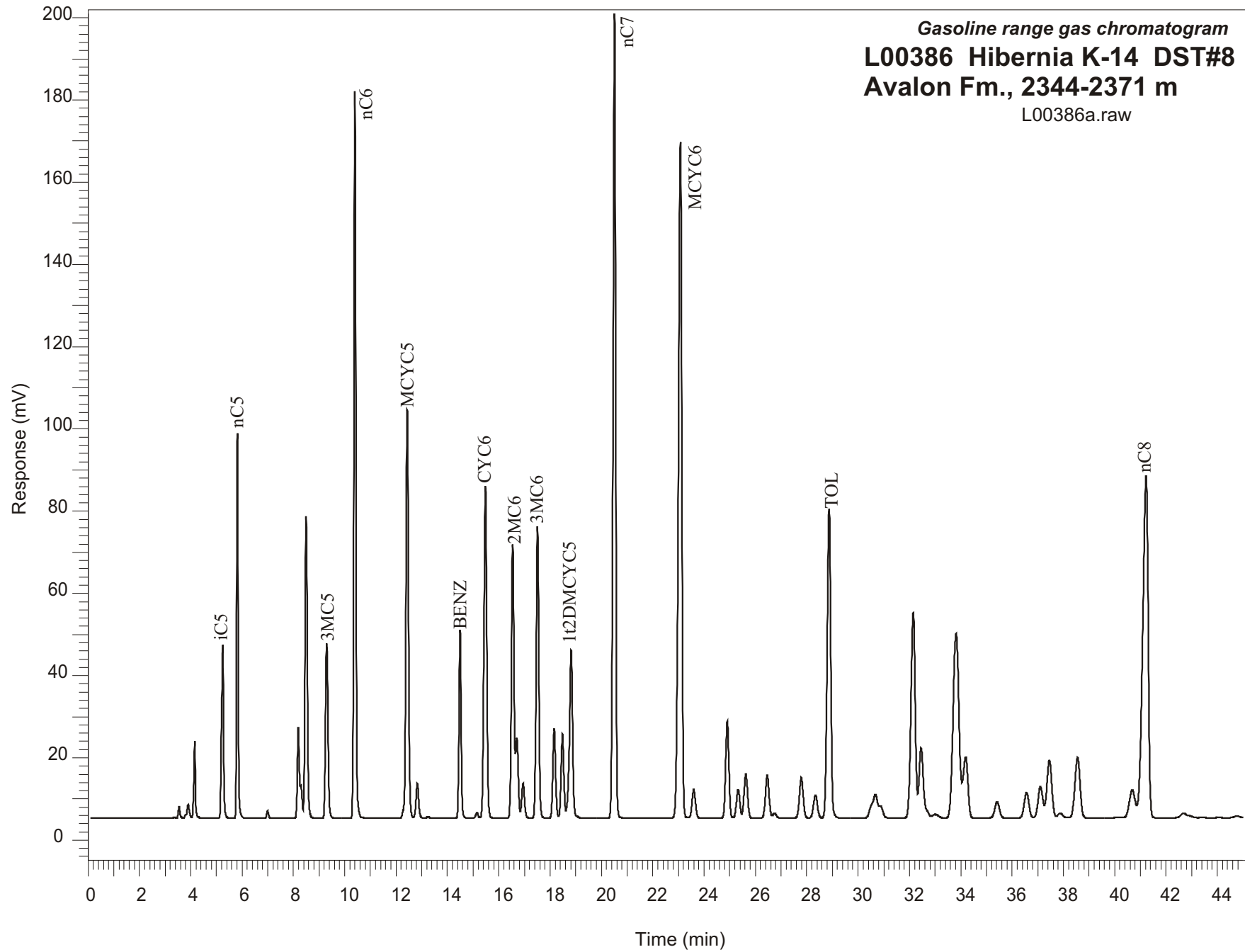


Gasoline range gas chromatogram  
L00386 Hibernia K-14 DST#8  
Avalon Fm., 2344-2371 m  
L00386a.raw



Sample Name: #386 Hibernia K-14 DST#8

-----  
GASOLINE RANGE ANALYSIS DATA  
-----

ORGANIC GEOCHEMISTRY LAB GSC CALGARY  
-----

Ret Time [min]	Compound	Area	Height [uV]
5.25	iC5	242367	42178
5.81	nC5	368817	93623
6.99	22DMC4	8850	1750
8.19	CYC5	124684	22042
8.3	23DMC4	35720	7983
8.49	2MC5	464560	73450
9.3	3MC5	289820	42512
10.4	nC6	929200	176766
12.43	MCYC5	682765	99361
12.83	24DMC5	62063	8424
13.25	223TMC4	2838	404
14.49	Benzene	266162	45734
15.15	33DMC5	9192	1268
15.48	CYC6	630357	80691
16.55	2MC6	477941	66614
16.7	23DMC5	133652	19617
16.95	11DMCYC5	64519	8454
17.51	3MC6	515517	71040
18.16	1c3DMCYC5	165011	21852
18.48	1t3DMCYC5	155222	20480
18.82	1t2DMCYC5	359086	40908
20.52	nC7	1384520	195806
23.08	MCYC6	1505198	164531
23.6	22DMC6	64005	6941
24.91	ECYC5	205369	23621
25.33	25DMC6	64643	6950
25.63	24DMC6	102186	10759
26.46	223TMC5	105693	10444
28.34	234TMC5	60106	5573
28.87	Toluene	724667	75221
32.15	2MC7	580567	49980
34.19	3MC7	193075	14908
40.68	1c4DMCYC6	107945	6847
41.22	nC8	1230255	83170