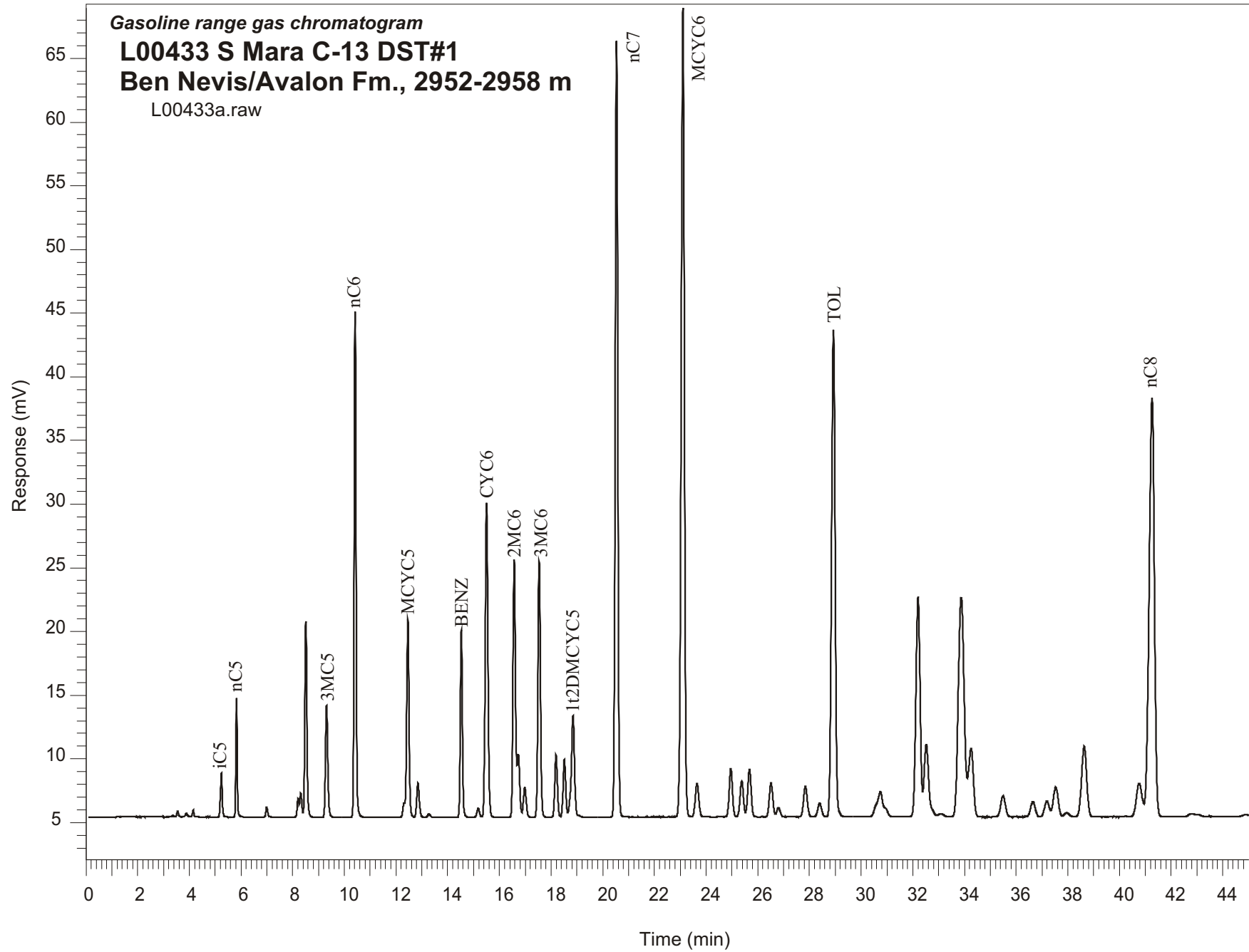


Gasoline range gas chromatogram
L00433 S Mara C-13 DST#1
Ben Nevis/Avalon Fm., 2952-2958 m
L00433a.raw



Sample Name: #433 South Mara C-13 DST#1

GASOLINE RANGE ANALYSIS DATA

ORGANIC GEOCHEMISTRY LAB GSC CALGARY

Ret Time [min]	Compound	Area	Height [uV]
5.24	iC5	17180	3460
5.82	nC5	33438	9317
7	22DMC4	4016	807
8.21	CYC5	7091	1487
8.31	23DMC4	10569	1890
8.51	2MC5	86073	15381
9.31	3MC5	53722	8757
10.41	nC6	201113	39758
12.31	22DMC5	5050	1116
12.46	MCYC5	98912	15541
12.85	24DMC5	18832	2661
13.28	223TMC4	1640	257
14.53	Benzene	83994	14688
15.18	33DMC5	5030	711
15.5	CYC6	183303	24685
16.58	2MC6	137414	20256
16.73	23DMC5	32825	4959
16.98	11DMCYC5	18070	2356
17.54	3MC6	137755	20066
18.19	1c3DMCYC5	34094	4859
18.52	1t3DMCYC5	31140	4459
18.85	1t2DMCYC5	67265	7861
20.54	nC7	418912	61001
23.1	MCYC6	547430	63469
23.65	22DMC6	25033	2619
24.96	ECYC5	32217	3774
25.38	25DMC6	25661	2827
25.68	24DMC6	34304	3717
26.51	223TMC5	25888	2675
28.4	234TMC5	11239	1066
28.93	Toluene	364647	38242
32.21	2MC7	195554	17292
34.26	3MC7	70266	5361
40.76	1c4DMCYC6	39761	2617
41.26	nC8	471162	32883