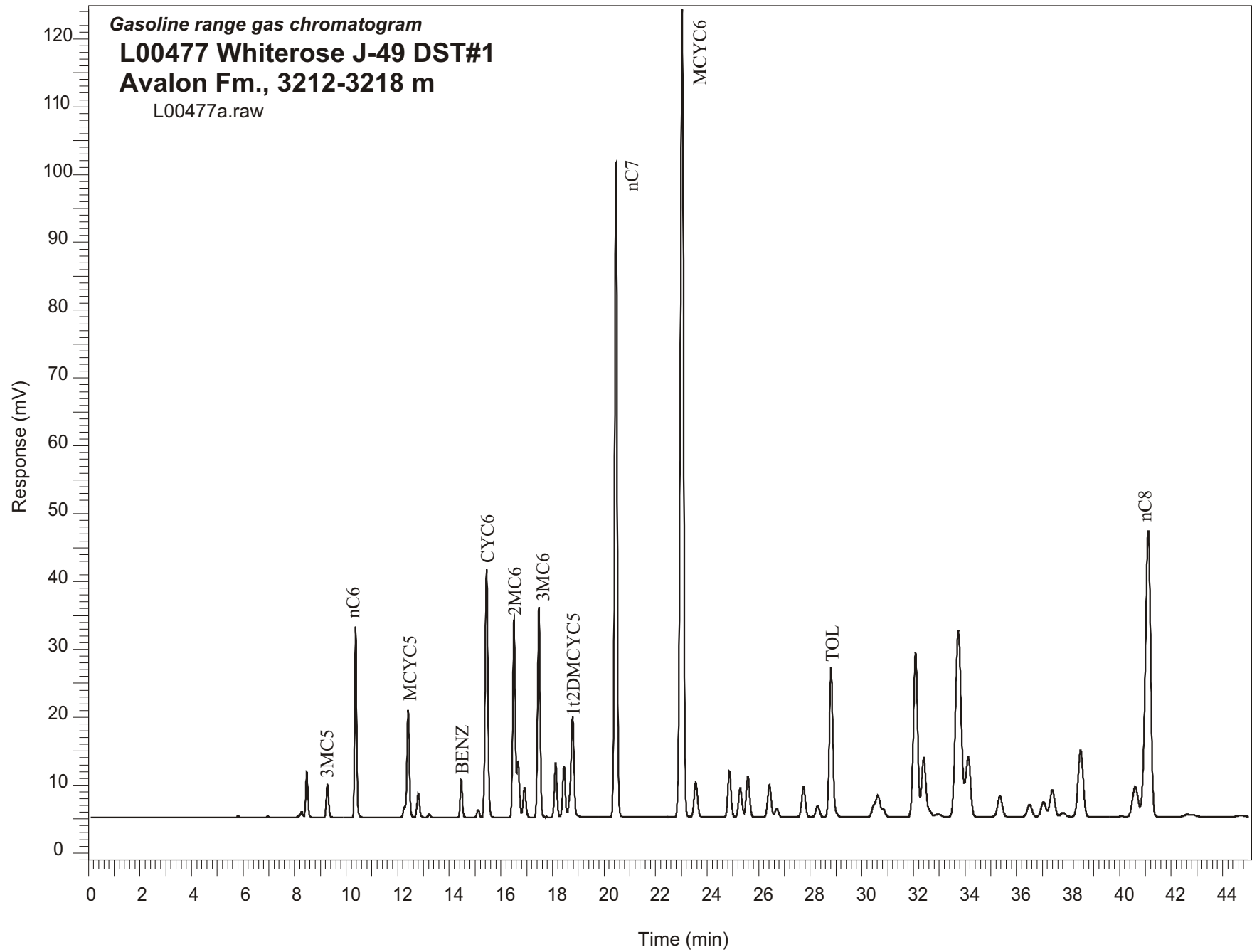


Gasoline range gas chromatogram
L00477 Whiterose J-49 DST#1
Avalon Fm., 3212-3218 m
L00477a.raw



Sample Name: #477 Whiterose D-278 DST#1

GASOLINE RANGE ANALYSIS DATA

ORGANIC GEOCHEMISTRY LAB GSC CALGARY

Ret Time [min]	Compound	Area	Height [uV]
5.8	nC5	870	242
6.97	22DMC4	836	179
8.18	CYC5	1695	386
8.28	23DMC4	4893	849
8.47	2MC5	39058	6779
9.27	3MC5	30980	4933
10.37	nC6	144122	28167
12.26	22DMC5	7440	1555
12.4	MCYC5	103433	15861
12.8	24DMC5	25455	3582
13.22	223TMC4	2914	448
14.46	Benzene	31652	5556
15.12	33DMC5	8051	1129
15.44	CYC6	273072	36613
16.51	2MC6	201464	29183
16.66	23DMC5	54761	8245
16.92	11DMCYC5	33164	4398
17.47	3MC6	216642	31014
18.13	1c3DMCYC5	56665	7983
18.45	1t3DMCYC5	53100	7469
18.78	1t2DMCYC5	124405	14604
20.47	nC7	668469	96515
23.56	MCYC6	47637	5079
24.87	ECYC5	57924	6756
25.28	25DMC6	38817	4283
25.58	24DMC6	55938	6026
26.42	223TMC5	46197	4764
28.29	234TMC5	16741	1613
28.81	Toluene	212827	22053
32.09	2MC7	276173	24234
34.13	3MC7	116003	8774
40.61	1c4DMCYC6	67425	4421
41.11	nC8	605024	42067