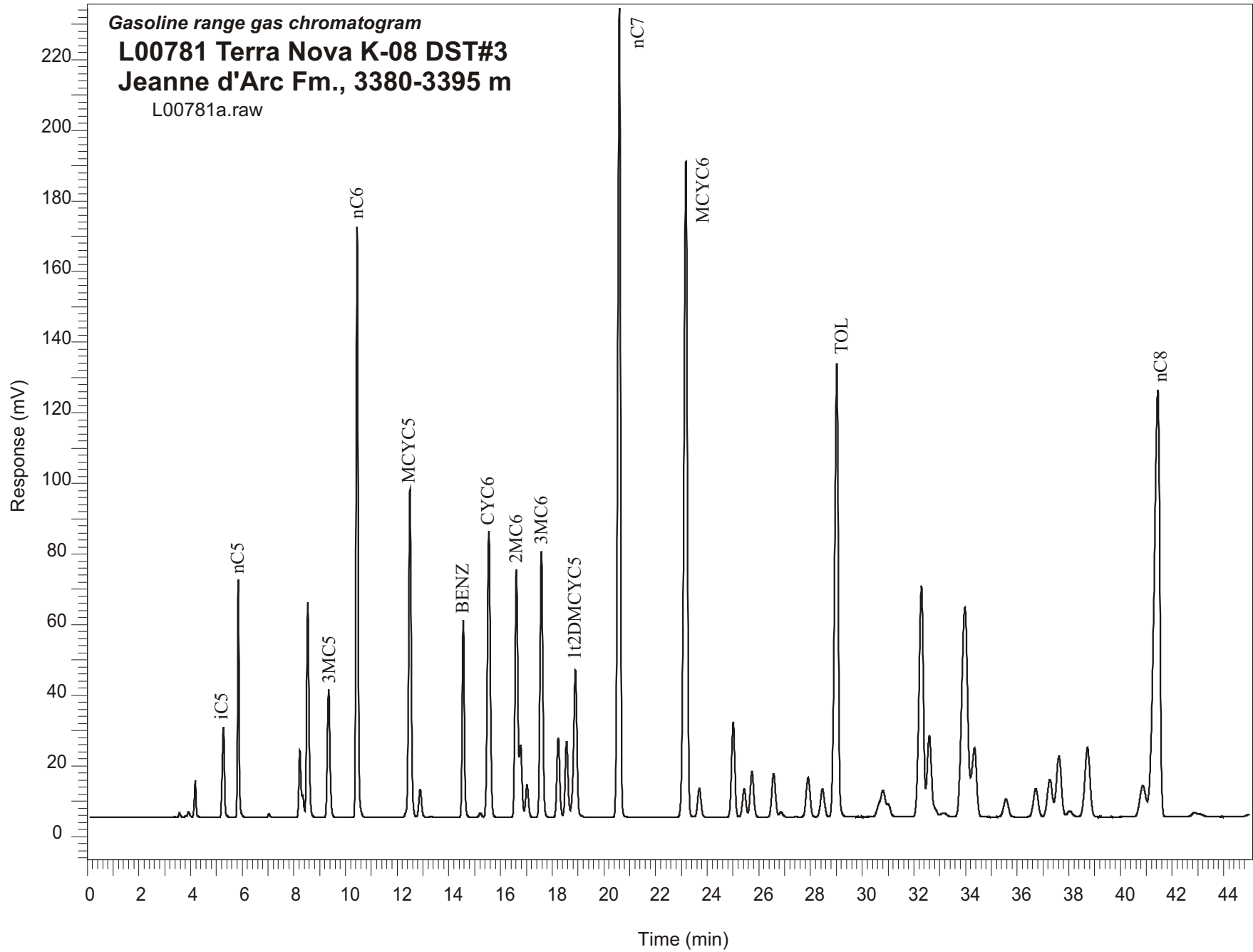


Gasoline range gas chromatogram
L00781 Terra Nova K-08 DST#3
Jeanne d'Arc Fm., 3380-3395 m
L00781a.raw



Sample Name: #781 Terra Nova K-08 DST#3

GASOLINE RANGE ANALYSIS DATA

ORGANIC GEOCHEMISTRY LAB GSC CALGARY

Ret Time [min]	Compound	Area	Height [uV]
5.28	iC5	154829	25534
5.85	nC5	271145	67239
7.04	22DMC4	5060	978
8.23	CYC5	110432	18891
8.34	23DMC4	26698	6242
8.54	2MC5	393499	60787
9.35	3MC5	252702	36148
10.45	nC6	904842	167392
12.49	MCYC5	650184	92941
12.89	24DMC5	60801	8067
13.31	223TMC4	2160	298
14.56	Benzene	329517	55867
15.22	33DMC5	8462	1171
15.55	CYC6	652482	81033
16.62	2MC6	513463	70125
16.77	23DMC5	141993	20620
17.02	11DMCYC5	70670	9157
17.59	3MC6	557173	75221
18.24	1c3DMCYC5	174452	22575
18.56	1t3DMCYC5	166448	21434
18.9	1t2DMCYC5	372786	41721
20.6	nC7	1661624	229496
23.18	MCYC6	1736853	185906
23.7	22DMC6	75475	8142
25.01	ECYC5	238940	26972
25.43	25DMC6	76558	8092
25.73	24DMC6	125055	12941
26.57	223TMC5	126464	12303
28.46	234TMC5	86130	7872
29.02	Toluene	1266112	128274
32.29	2MC7	775388	65418
34.35	3MC7	253333	19518
40.86	1c4DMCYC6	140471	8805
41.45	nC8	1878598	120927