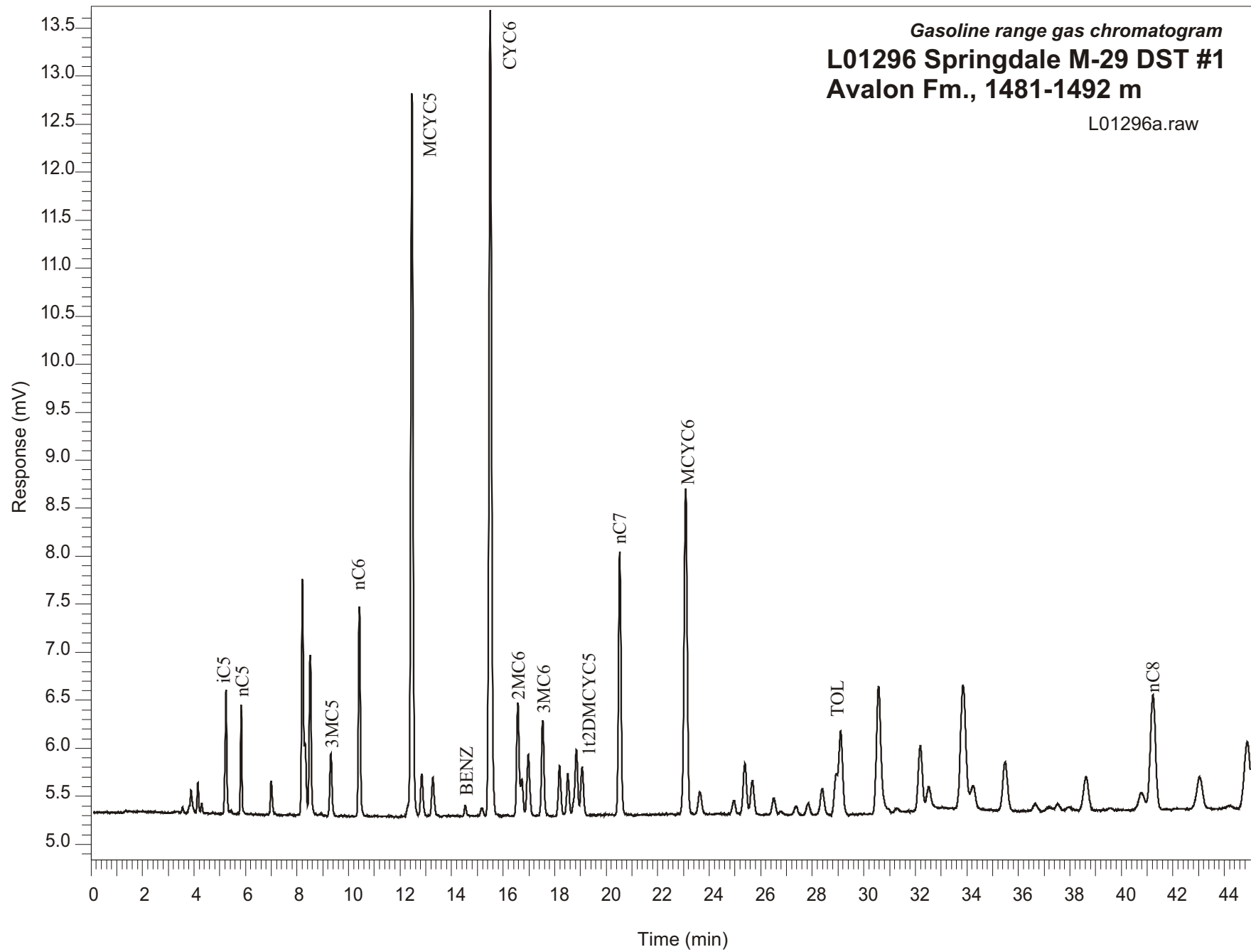


Gasoline range gas chromatogram
L01296 Springdale M-29 DST #1
Avalon Fm., 1481-1492 m

L01296a.raw



Sample Name: #1296 Springdale M-29 DST#1

GASOLINE RANGE ANALYSIS DATA

ORGANIC GEOCHEMISTRY LAB GSC CALGARY

Ret Time [min]	Compound	Area	Height [uV]
5.24	iC5	6209	1285
5.83	nC5	3917	1127
7	22DMC4	1688	352
8.21	CYC5	12676	2456
8.31	23DMC4	3222	744
8.51	2MC5	8873	1653
9.31	3MC5	3795	650
10.42	nC6	11123	2182
12.46	MCYC5	47107	7533
12.84	24DMC5	2905	433
13.27	223TMC4	2640	397
14.53	Benzene	606	111
15.18	33DMC5	538	79
15.5	CYC6	59811	8382
16.57	2MC6	8043	1178
16.72	23DMC5	2320	374
16.98	11DMCYC5	4610	625
17.54	3MC6	6771	989
18.19	1c3DMCYC5	3735	524
18.51	1t3DMCYC5	3179	438
18.84	1t2DMCYC5	5876	690
20.53	nC7	18961	2744
23.09	MCYC6	28759	3386
23.64	22DMC6	2046	224
24.96	ECYC5	1065	134
25.38	25DMC6	4976	531
25.68	24DMC6	3137	348
26.51	223TMC5	1551	169
28.39	234TMC5	2673	265
29.1	Toluene	9500	862
32.2	2MC7	7224	660
34.25	3MC7	2264	203
40.79	1c4DMCYC6	1704	132
41.22	nC8	15555	1148