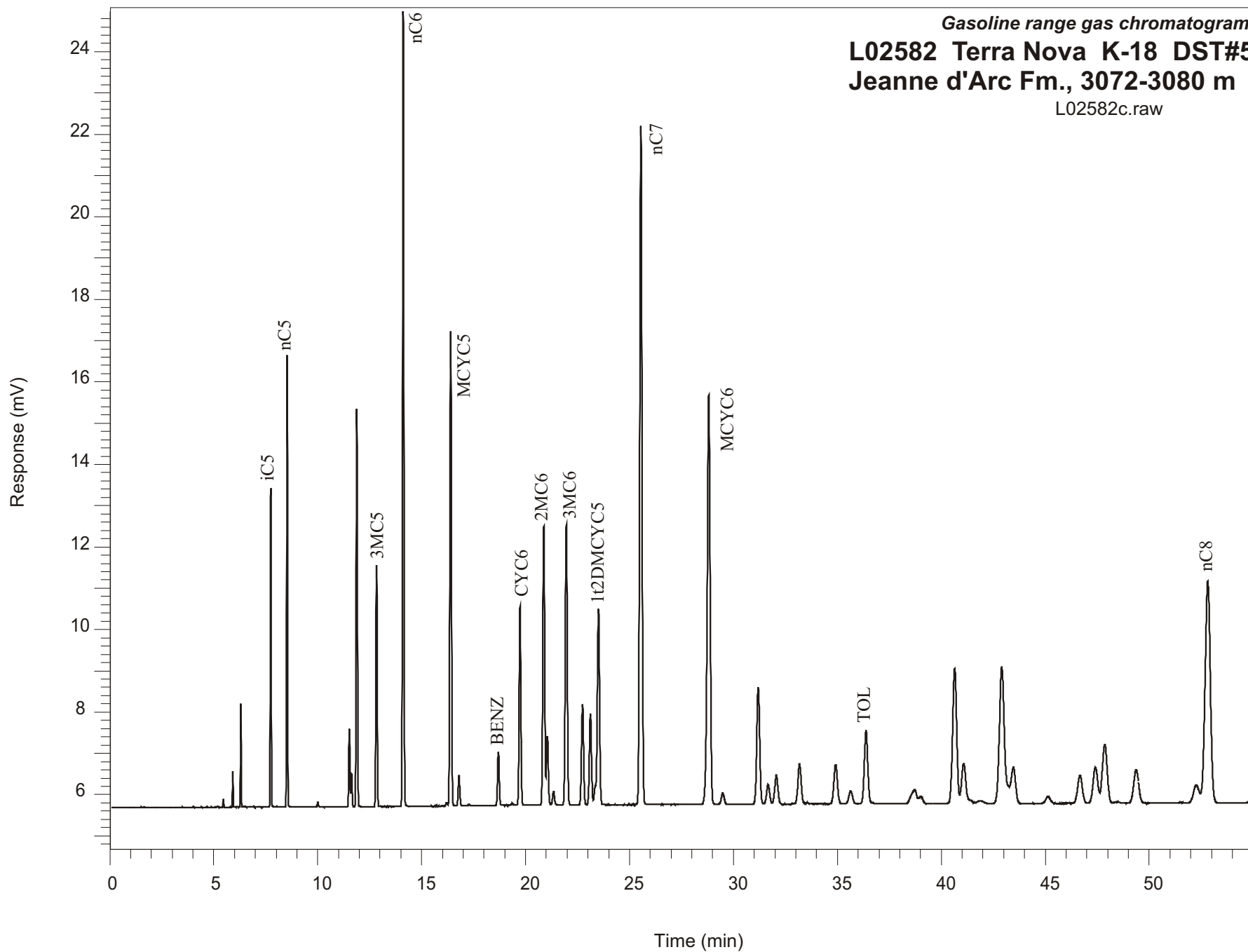


Gasoline range gas chromatogram  
L02582 Terra Nova K-18 DST#5  
Jeanne d'Arc Fm., 3072-3080 m  
L02582c.raw



Sample Name: #2582 Terra Nova K-18 DST#5

-----  
GASOLINE RANGE ANALYSIS DATA  
-----

ORGANIC GEOCHEMISTRY LAB GSC CALGARY  
-----

Ret Time [min]	Compound	Area	Height [uV]
7.74	iC5	20944	7717
8.53	nC5	31443	11012
10.01	22DMC4	447	113
11.52	CYC5	7435	1898
11.63	23DMC4	3276	810
11.88	2MC5	38370	9640
12.83	3MC5	25108	5855
14.12	nC6	84035	19248
16.2	22DMC5	379	80
16.4	MCYC5	58468	11510
16.8	24DMC5	3845	732
18.69	Benzene	6922	1295
19.36	33DMC5	248	44
19.73	CYC6	28233	4822
20.87	2MC6	41043	6765
21.05	23DMC5	10460	1674
21.35	11DMCYC5	2114	316
21.96	3MC6	44032	6778
22.74	1c3DMCYC5	16654	2440
23.12	1t3DMCYC5	15364	2212
23.51	1t2DMCYC5	37256	4749
25.55	nC7	124295	16453
28.81	MCYC6	95378	9912
29.48	22DMC6	2530	267
31.19	ECYC5	27969	2840
31.67	25DMC6	4769	466
32.06	24DMC6	7242	694
33.18	223TMC5	10351	959
35.64	234TMC5	3690	309
36.38	Toluene	20518	1780
40.64	2MC7	43363	3242
43.47	3MC7	13934	874
52.26	1c4DMCYC6	7886	422
52.81	nC8	94510	5371