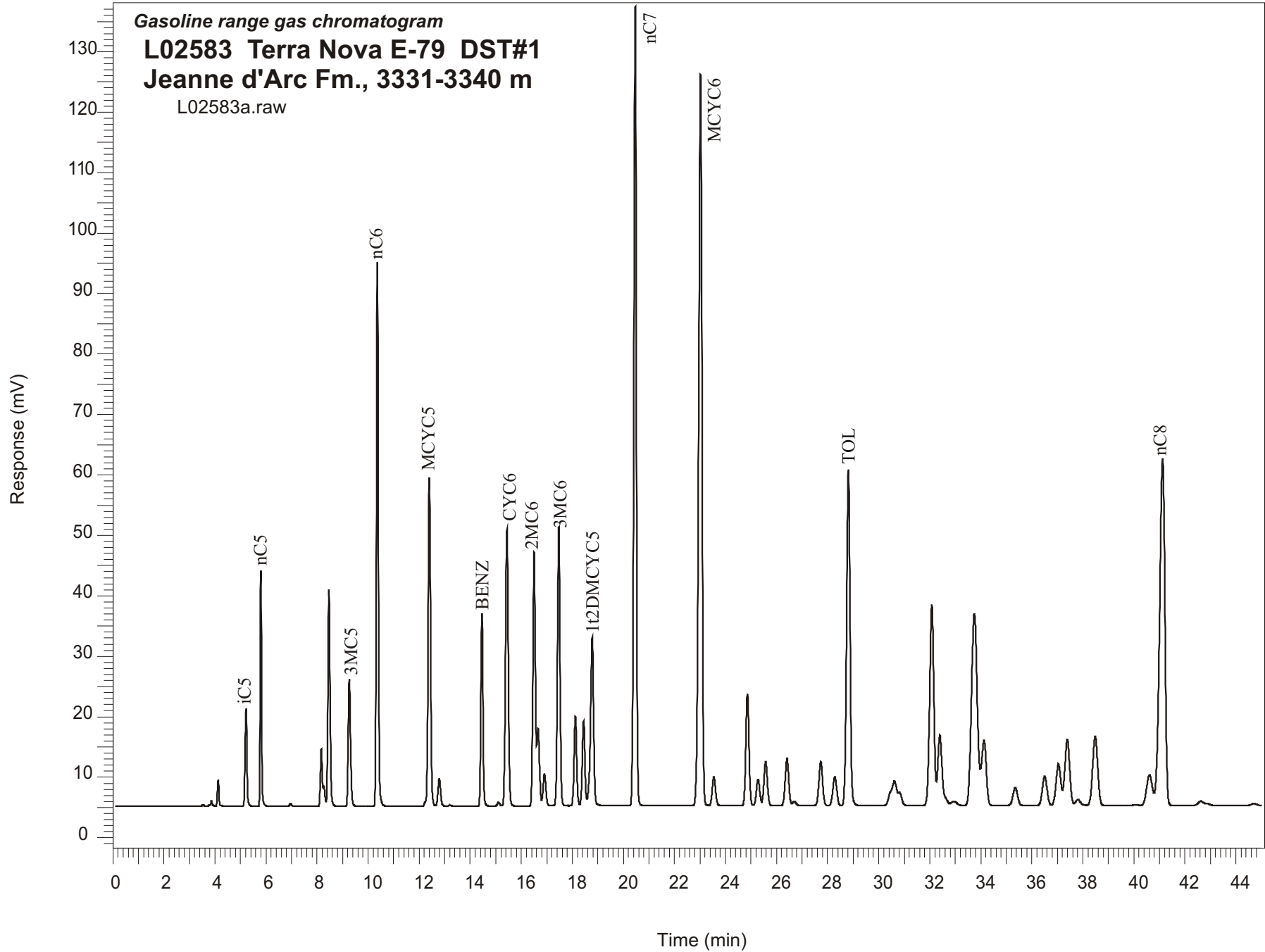


Gasoline range gas chromatogram  
**L02583 Terra Nova E-79 DST#1**  
**Jeanne d'Arc Fm., 3331-3340 m**  
L02583a.raw



Sample Name: #2583 Terra Nova E-79 DST#1

-----  
GASOLINE RANGE ANALYSIS DATA  
-----

ORGANIC GEOCHEMISTRY LAB GSC CALGARY  
-----

Ret Time [min]	Compound	Area	Height [uV]
5.22	iC5	85060	16234
5.8	nC5	138766	39022
6.96	22DMC4	2407	503
8.16	CYC5	48590	9488
8.27	23DMC4	15589	3316
8.46	2MC5	206627	35927
9.26	3MC5	133264	21021
10.36	nC6	456507	90066
12.4	MCYC5	353191	54442
12.79	24DMC5	33165	4608
13.21	223TMC4	1112	159
14.46	Benzene	181161	31856
15.11	33DMC5	4344	610
15.44	CYC6	344544	45778
16.5	2MC6	290438	42018
16.66	23DMC5	86320	12794
16.91	11DMCYC5	40556	5313
17.47	3MC6	323841	46176
18.12	1c3DMCYC5	107069	14774
18.44	1t3DMCYC5	101987	13998
18.78	1t2DMCYC5	237773	27932
20.47	nC7	919985	132344
23.02	MCYC6	1066159	120978
23.54	22DMC6	42670	4698
24.86	ECYC5	159310	18454
25.28	25DMC6	39854	4361
25.57	24DMC6	67583	7239
26.41	223TMC5	77011	7840
28.28	234TMC5	49496	4730
28.82	Toluene	528311	55480
32.09	2MC7	380848	33232
34.13	3MC7	139085	10777
40.61	1c4DMCYC6	78678	5073
41.13	nC8	830790	57432