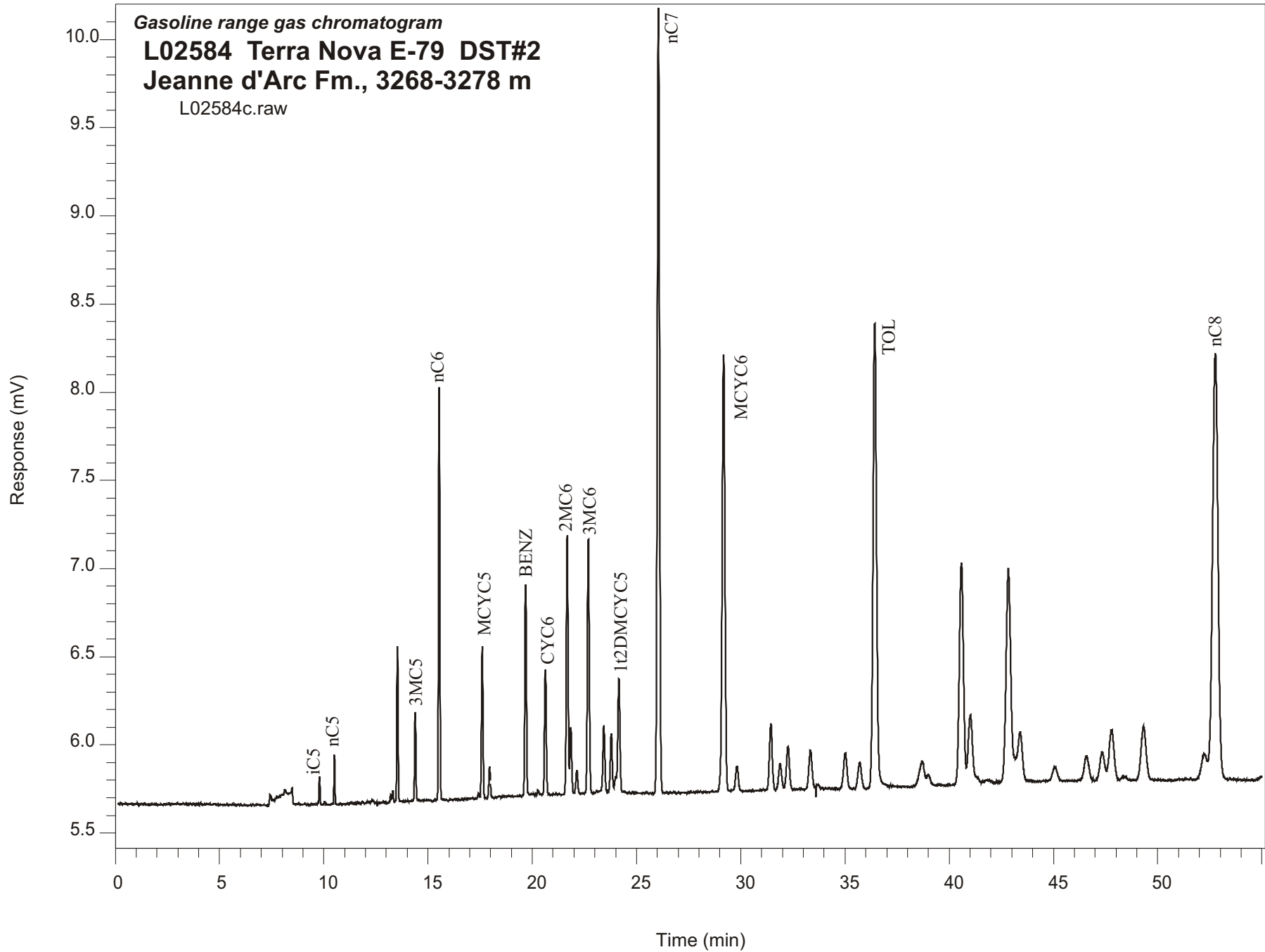


Gasoline range gas chromatogram
L02584 Terra Nova E-79 DST#2
Jeanne d'Arc Fm., 3268-3278 m
L02584c.raw



Sample Name: #2584 Terra Nova E-79 DST#2

GASOLINE RANGE ANALYSIS DATA

ORGANIC GEOCHEMISTRY LAB GSC CALGARY

Ret Time [min]	Compound	Area	Height [uV]
9.79	iC5	469	155
10.51	nC5	834	281
13.21	CYC5	156	43
13.31	23DMC4	230	60
13.53	2MC5	3412	878
14.39	3MC5	2096	502
15.54	nC6	9879	2345
17.6	MCYC5	4200	860
17.96	24DMC5	901	177
19.68	Benzene	6176	1193
20.27	33DMC5	111	17
20.63	CYC6	3984	703
21.67	2MC6	8668	1469
21.85	23DMC5	2299	379
22.13	11DMCYC5	877	133
22.69	3MC6	9036	1437
23.43	1c3DMCYC5	2446	372
23.79	1t3DMCYC5	2216	330
24.15	1t2DMCYC5	4616	642
26.05	nC7	32680	4453
29.18	MCYC6	22710	2470
29.82	22DMC6	1154	134
31.44	ECYC5	3517	375
31.88	25DMC6	1507	148
32.27	24DMC6	2476	242
33.35	223TMC5	2121	210
35.71	234TMC5	1723	149
36.43	Toluene	30386	2617
40.58	2MC7	16560	1240
43.4	3MC7	4300	274
52.22	1c4DMCYC6	710	67
52.76	nC8	41433	2354