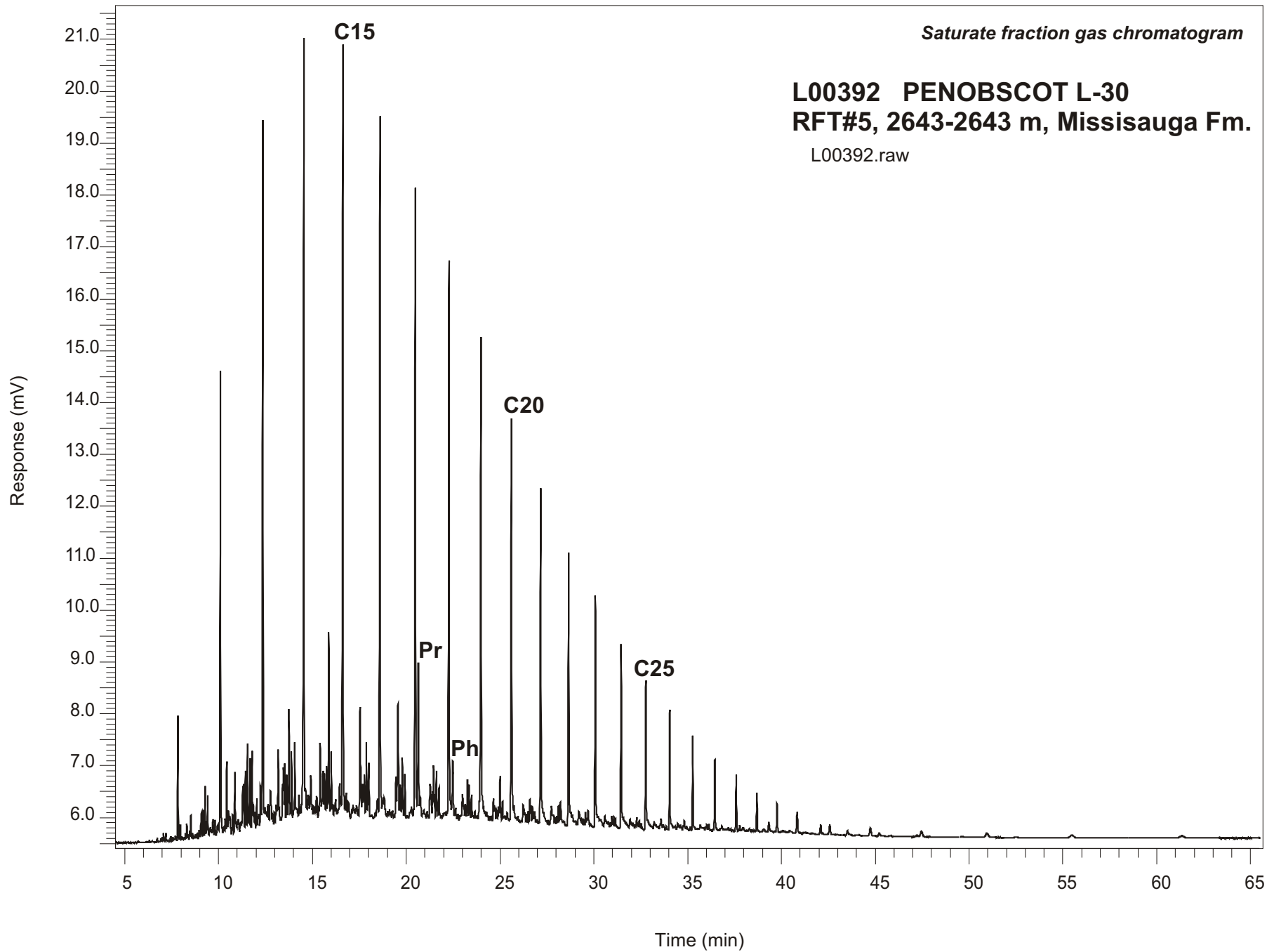


Saturate fraction gas chromatogram

L00392 PENOBSCOT L-30
RFT#5, 2643-2643 m, Missisauga Fm.

L00392.raw



**PENOBSCOT L-30
GSC #L00392, RFT#5
Saturate Fraction Gas Chromatogram Report**

RET TIME [min]	PEAK	AREA	HEIGHT [uV]
10.10	C12	19883	8928
12.36	C13	32473	13640
14.55	C14	39910	15035
16.63	C15	40471	15188
18.61	C16	36175	13568
20.49	C17	34047	12334
20.65	Pr	9958	2969
22.28	C18	30057	10765
22.48	Ph	4535	1118
23.98	C19	28189	9297
25.61	C20	21111	7748
27.16	C21	20069	6500
28.65	C22	14769	5258
30.08	C23	11579	4383
31.45	C24	10532	3528
32.77	C25	7268	2799
34.04	C26	5539	2256
35.27	C27	5030	1829
36.45	C28	3819	1383
37.59	C29	3099	1102
38.69	C30	1949	750
39.76	C31	1491	552
40.84	C32	1663	414