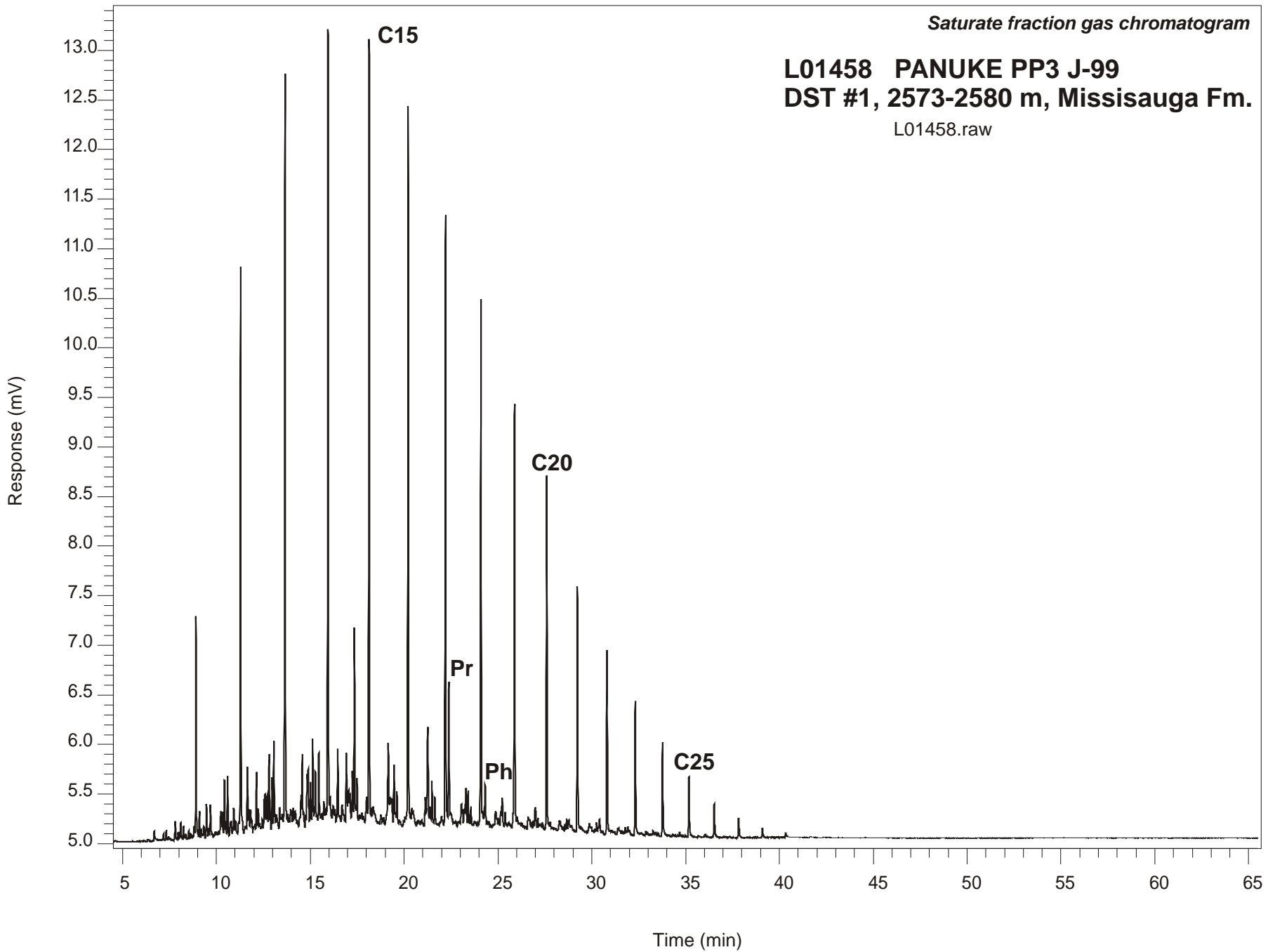


*Saturate fraction gas chromatogram*

**L01458 PANUKE PP3 J-99  
DST #1, 2573-2580 m, Missisauga Fm.**

L01458.raw



**PANUKE PP3 J-99**  
**GSC #L01458, DST#1**  
**Saturate Fraction Gas Chromatogram Report**

<b>RET TIME [min]</b>	<b>PEAK</b>	<b>AREA</b>	<b>HEIGHT [uV]</b>
11.29	C12	13525	5669
13.66	C13	18995	7526
15.95	C14	20720	8084
18.14	C15	20668	7848
20.22	C16	19595	7280
22.21	C17	16866	6113
22.38	Pr	4212	1351
24.09	C18	13877	5344
24.32	Ph	1700	415
25.88	C19	12031	4225
27.60	C20	9173	3530
29.23	C21	7111	2451
30.81	C22	5263	1836
32.32	C23	3939	1363
33.77	C24	2658	934
35.17	C25	1877	606
36.52	C26	1043	333
37.83	C27	715	198
39.09	C28	328	92
40.34	C29	164	39